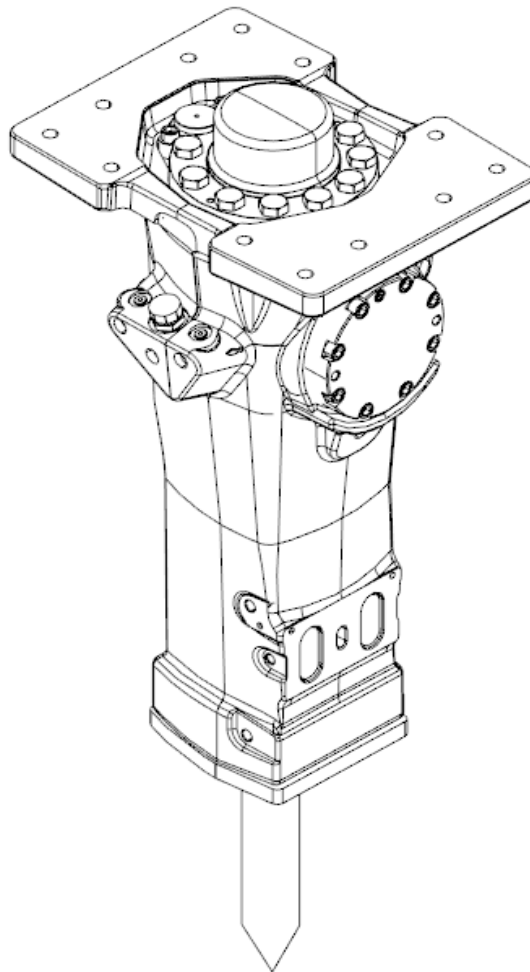


SB 702

Spare parts list Hydraulic breakers

SB 702 s/n BES043707 –



General information

This spare parts list applies to the following:

| Part number | Description |
|-------------|-------------|
| 8460030085 | SB 702 |

Use only authorized parts. Any damage or malfunction caused by the use of unauthorized parts is not covered by Warranty or Product Liability. Any unauthorized use or copying of the contents or any part thereof is prohibited. This applies in particular to trademarks, model denominations, part numbers, and drawings.

Instructions for use

This spare parts list contains no safety regulations and is merely intended to assist in the ordering of spare parts.
For information about operating, servicing, or repairing, the relevant Safety and operating instructions must be consulted at all costs.
Please observe the safety instructions listed in the relevant Safety and operating instructions!

Service, repair and wear part kits

| | |
|------------------------|---|
| Label kit | 1 |
| Seal kit | 3 |
| Lower hammer part kit | 5 |
| Accumulator repair kit | 7 |
| Service tool | 9 |

Mechanical

| | |
|---|----|
| Hydraulic breaker | 11 |
| HATCON (Horizontal) | 15 |
| Optional parts - Bushing oversize, complete | 17 |
| Optional parts - Restrictor, complete | 19 |
| Tightening torque | 21 |
| Dimensions (mm) | 23 |

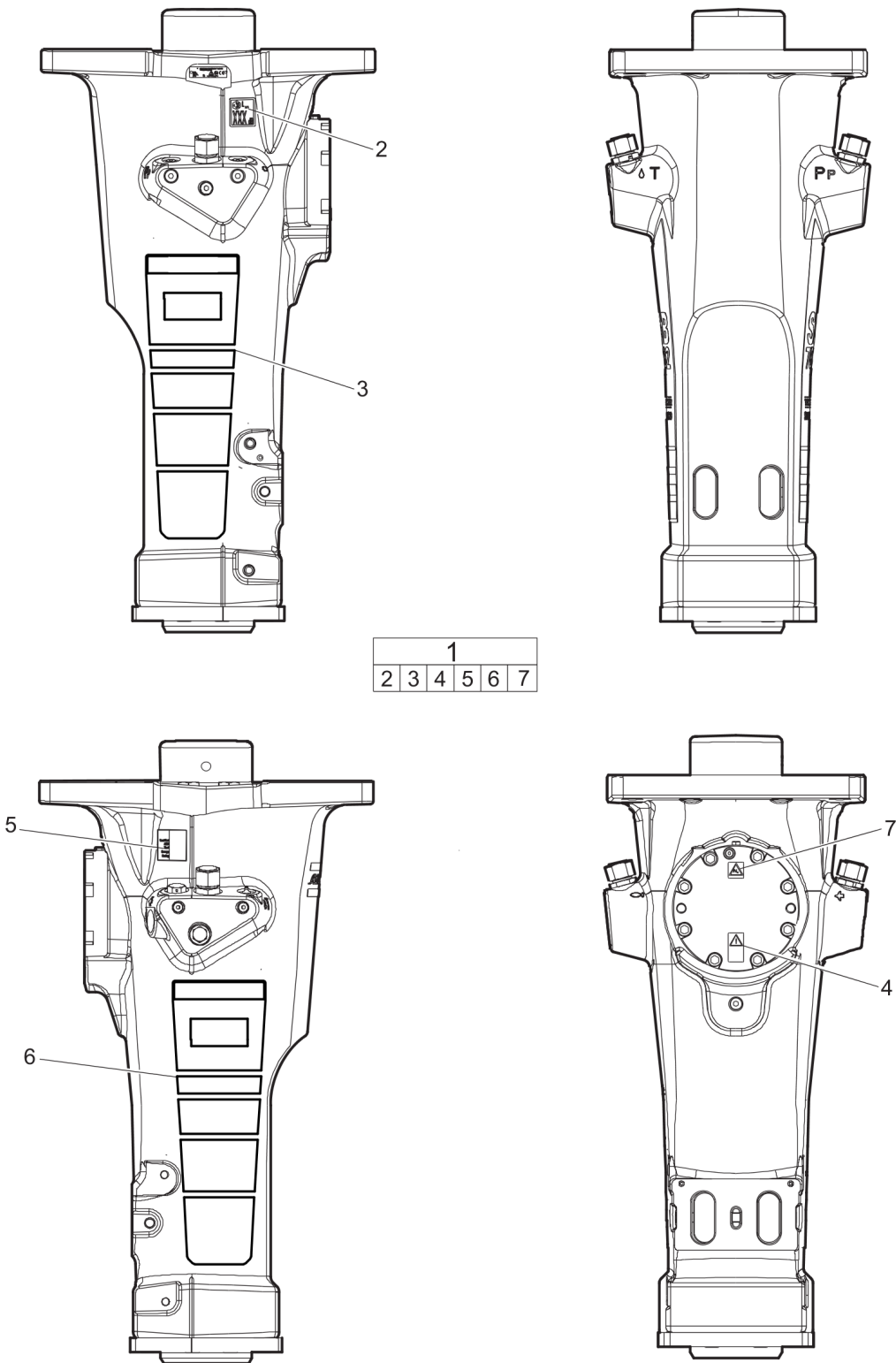
Options / accessories

| | |
|---------------------------|----|
| Retrofit | 24 |
| Optional equipment | 27 |
| Working tools ClassicLine | 29 |
| Working tools ProLine | 31 |
| Hydraulic hoses | 33 |

Annex

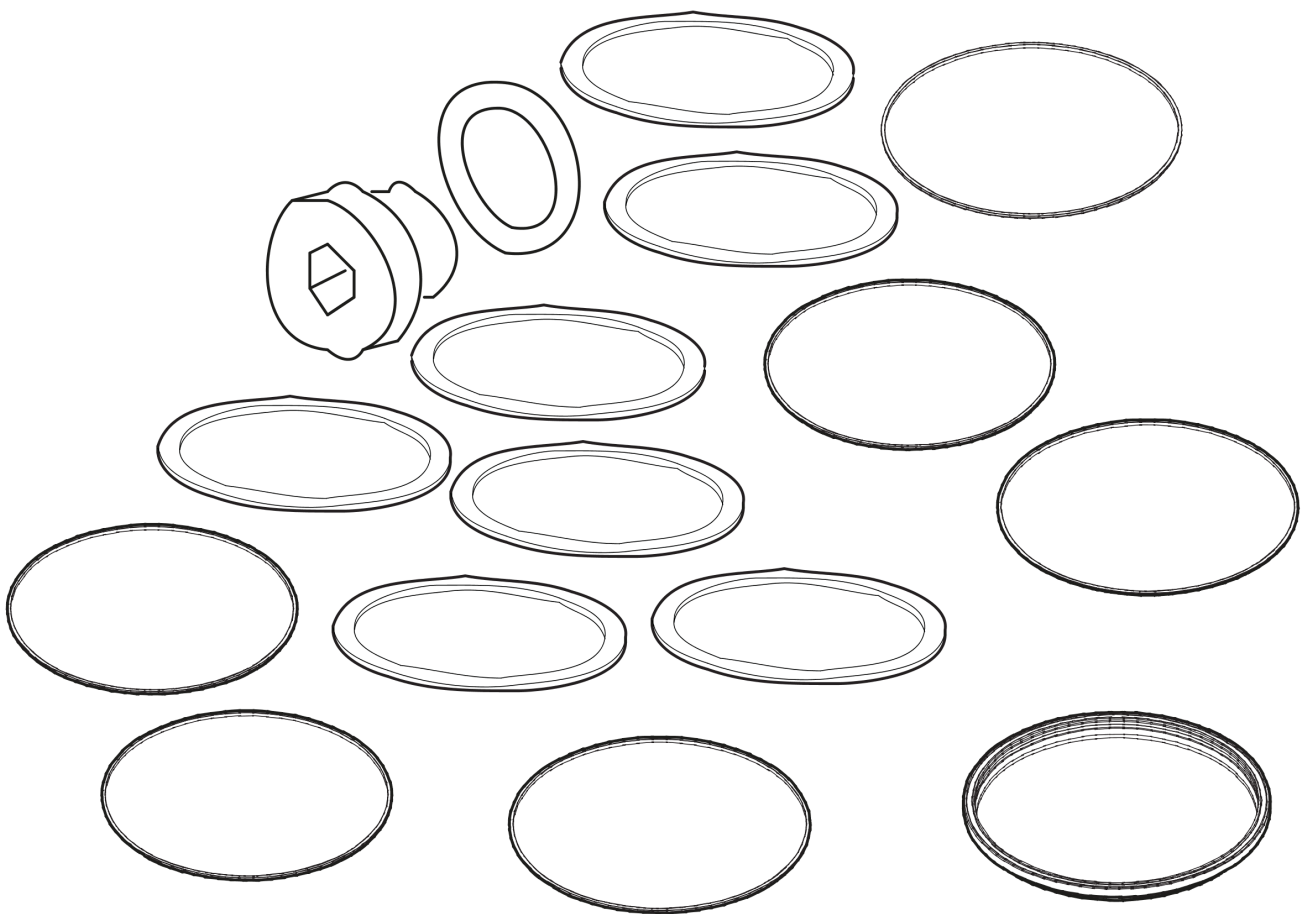
| | |
|--|----|
| Environmental Product Compliance - REACH Declaration | 35 |
|--|----|

Service, repair and wear part kits Label kit



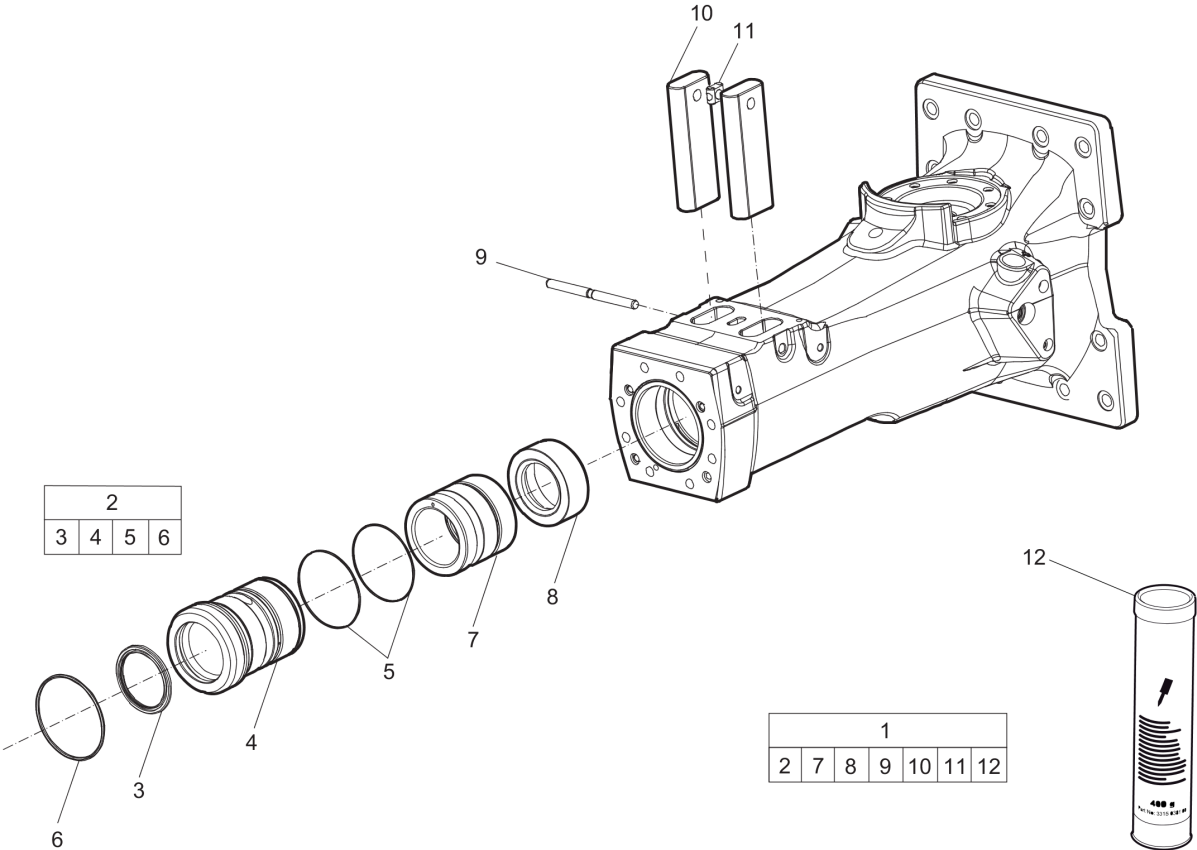
| Item | Part No. | Name | Qty | L |
|------|------------|------------------------|-----|---|
| 1 | 3315409701 | Label kit | 1 | |
| 2 | 3310132722 | Noise level label | 1 | |
| 3 | - | Product label "SB 702" | 1 | |
| 4 | 3315262900 | Safety label | 1 | |
| 5 | 3315254600 | AEM sign | 1 | |
| 6 | - | Product label "SB 702" | 1 | |
| 7 | 3115263000 | SAFETY LABEL | 1 | |

Service, repair and wear part kits Seal kit



| Item | Part No. | Name | Qty | L |
|------|------------|--|-----|---|
| - | 3315409702 | Seal kit | 1 | |
| - | 0663210824 | O-ring, $\varnothing 134.5 \times 3$ mm, $\varnothing 5.30 \times 0.12$ in. | 2 | |
| - | 0663211647 | O-ring | 1 | |
| - | 0663211649 | O-ring, 171.12×2.62 mm, 6.74×0.10 in. | 1 | |
| - | 3315388700 | Scraper ring | 1 | |
| - | 0663210658 | O-RING | 1 | |
| - | 0663990040 | O-ring, $177.10 \times 182.50 \times 4$ mm, $6.97 \times 7.19 \times 0.16$ in. | 9 | |
| - | 0665070158 | Piston rod seal | 1 | |
| - | 0665909955 | Wiper | 1 | |
| - | 0665070157 | Piston rod seal | 1 | |
| - | 3315280800 | VALVE RUBBER | 1 | |
| - | 3115329002 | SEAL RING | 1 | |
| - | 0663212000 | O-RING | 1 | |
| - | 0663211400 | O-RING | 1 | |
| - | 0663910401 | O-RING | 2 | |
| - | 0663903201 | O-RING, $\varnothing 15.6 \times 1.78$ | 2 | |
| - | 0663990041 | Stirromatic, $58 \times 66 \times 3$ mm, $2.28 \times 2.60 \times 0.12$ in. | 1 | |

Service, repair and wear part kits Lower hammer part kit



| Item | Part No. | Name | Qty | L |
|------|------------|---|-----|---|
| 1 | 3315409708 | Lower hammer part kit | 1 | |
| 2 | 3315409707 | Lower bushing complete | 1 | |
| 3 | 3315388700 | Scraper ring | 1 | |
| 4 | --- | Lower bushing, Ø144.50 mm, Ø5.69 in. | 1 | |
| 5 | 0663210824 | O-ring, ø134.5 x 3 mm, ø5.30 x 0.12 in. | 2 | |
| 6 | 0663210658 | O-RING | 1 | |
| 7 | 3315395000 | Upper bushing, Ø144 mm, Ø5.67 in. | 1 | |
| 8 | 3315388200 | Stop ring | 1 | |
| 9 | 3315397200 | Locking pin | 1 | |
| 10 | 3315388300 | Retainer bar | 2 | |
| 11 | 3315141900 | LOCK BUFFER | 1 | |
| 12 | -- | Chisel paste cartridge | 1 | A |

Comments for Page: Lower hammer part kit

(L)OCAL REMARKS

A | 400 g

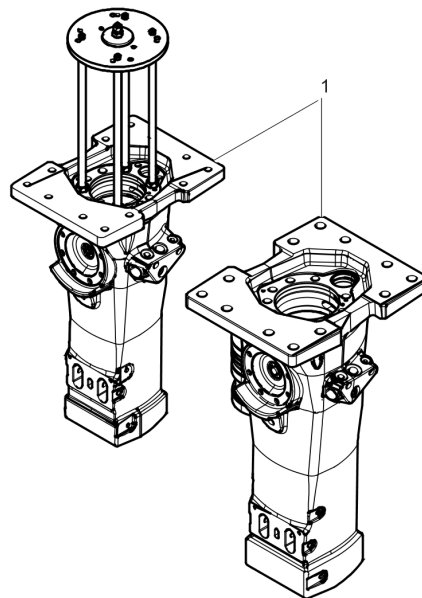
0.88 lb

Service, repair and wear part kits Accumulator repair kit

NO EXPLODED VIEW
AVAILABLE
FOR THIS BOM

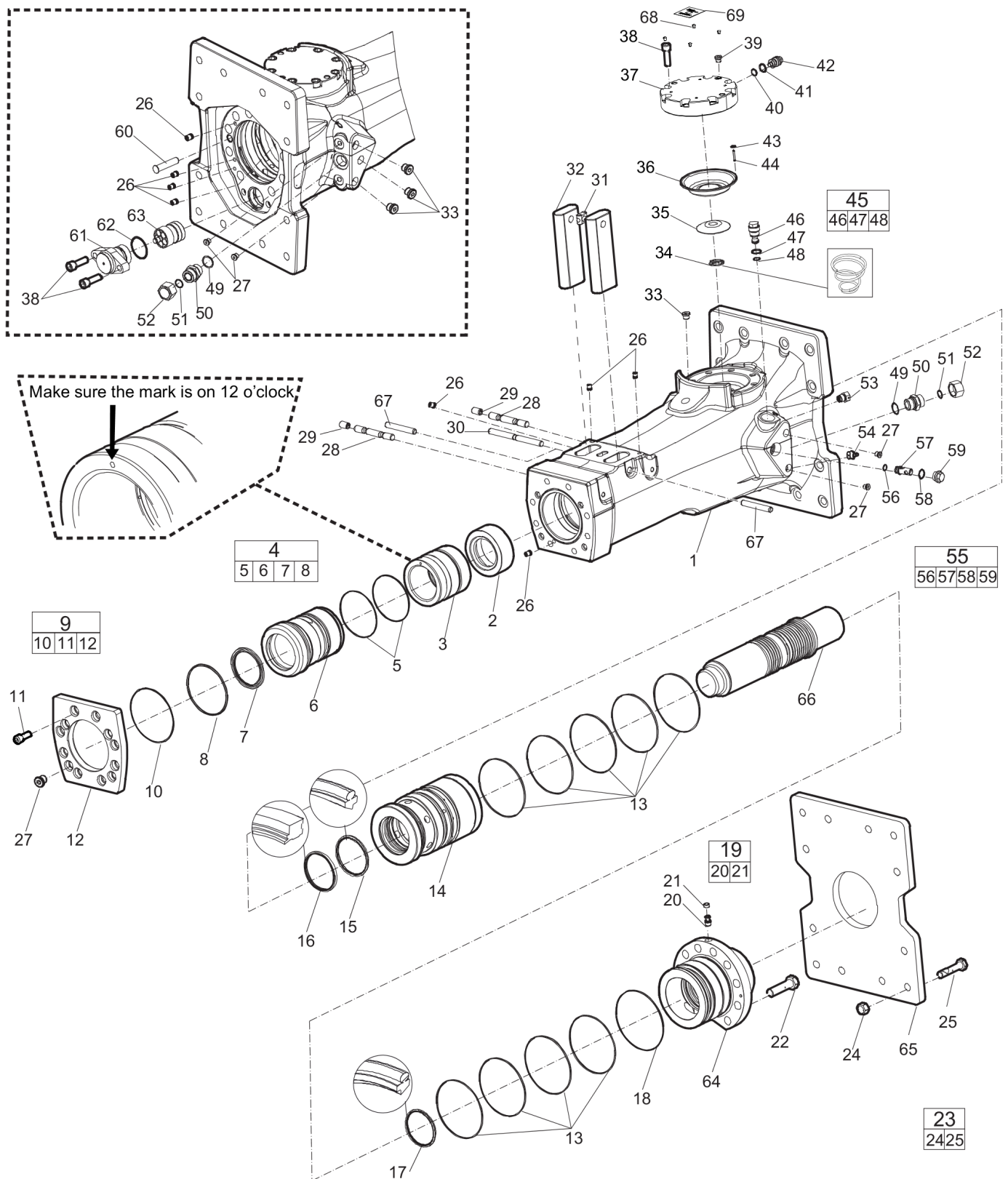
| Item | Part No. | Name | Qty | L |
|------|------------|--|-----|---|
| - | 3315409709 | Accumulator repair kit | 1 | |
| - | 3315303500 | COIL SPRING | 1 | |
| - | 3315388500 | Diaphragm support | 1 | |
| - | 3315416300 | Diaphragm | 1 | |
| - | 0211196544 | Hexagon socket screw M16 x 50 mm Screw with extra high fatigue strength. | 8 | |
| - | 0686371805 | PLUG | 1 | |
| - | 3115329002 | SEAL RING | 1 | |
| - | 0663212000 | O-RING | 1 | |
| - | 3315366000 | VALVE | 1 | |
| - | 0663211400 | O-RING | 1 | |
| - | 0101414000 | PIN | 1 | |

Service, repair and wear part kits Service tool



| Item | Part No. | Name | Qty | L |
|------|----------|---|-----|---|
| 1 | | Service tool for liner (Consult technical service for drawings) | 1 | |

Mechanical Hydraulic breaker



Refer to the DocMine web page for most up-to-date information. The printed information might be outdated.

Wed Nov 24 07:06:09 UTC 2021

| Item | Part No. | Name | Qty | L |
|------|------------|--|-----|---|
| 1 | - | HAMMER BODY | 1 | |
| 2 | 3315388200 | Stop ring | 1 | |
| 3 | 3315395000 | Upper bushing, Ø144 mm, Ø5.67 in. | 1 | |
| 4 | 3315409707 | Lower bushing complete | 1 | |
| 5 | 0663210824 | O-ring, Ø134.5 x 3 mm, Ø5.30 x 0.12 in. | 2 | |
| 6 | - | Lower bushing, Ø144.50 mm, Ø5.69 in. | 1 | |
| 7 | 3315388700 | Scraper ring | 1 | |
| 8 | 0663210658 | O-RING | 1 | |
| 9 | 3315409706 | Wear plate, complete | 1 | |
| 10 | 0663211647 | O-ring | 1 | |
| 11 | 3315431101 | Hexagon socket screw | 8 | |
| 12 | - | Wear plate | 1 | |
| 13 | 0663990040 | O-ring, 177.10 x 182.50 x 4 mm, 6.97 x 7.19 x 0.16 in. | 9 | |
| 14 | 3315409000 | Liner | 1 | |
| 15 | 0665070158 | Piston rod seal | 1 | |
| 16 | 0665909955 | Wiper | 1 | |
| 17 | 0665070157 | Piston rod seal | 1 | |
| 18 | 0663211649 | O-ring, 171.12 x 2.62 mm, 6.74 x 0.10 in. | 1 | |
| 19 | 3315244881 | CHECK VALVE | 1 | |
| 20 | - | CHECK VALVE | 1 | |
| 21 | 3315280800 | VALVE RUBBER | 1 | |
| 22 | 0147163803 | SCREW, HEX HEAD | 10 | |
| 23 | 3315323990 | Bolt kit | 1 | |
| 24 | -- | Nut, M20 | 9 | |
| 25 | -- | Screw | 12 | |
| 26 | 0686100009 | Plug, Ø10 mm, Ø0.39 in. | 8 | |
| 27 | 0686644207 | PLUG | 8 | A |
| 28 | 3315395700 | Locking pin | 2 | |
| 29 | 0108110322 | Spring pin | 2 | |
| 30 | 3315397200 | Locking pin | 1 | |
| 31 | 3315141900 | LOCK BUFFER | 1 | |
| 32 | 3315388300 | Retainer bar | 2 | |
| 33 | 0686371801 | PLUG | 4 | B |
| 34 | 3315303500 | COIL SPRING | 1 | |
| 35 | 3315388500 | Diaphragm support | 1 | |
| 36 | 3315416300 | Diaphragm | 1 | |
| 37 | 3315303100 | Diaphragm cover | 1 | |

Refer to the DocMine web page for most up-to-date information. The printed information might be outdated.

Wed Nov 24 07:06:09 UTC 2021

| Item | Part No. | Name | Qty | L |
|------|------------|--|-----|---|
| 38 | 0211196544 | Hexagon socket screw M16 x 50 mm Screw with extra high fatigue strength. | 10 | C |
| 39 | 0686371805 | PLUG | 1 | D |
| 40 | 3115329002 | SEAL RING | 1 | |
| 41 | 0663212000 | O-RING | 1 | |
| 42 | 3315366000 | VALVE | 1 | |
| 43 | 0663211400 | O-RING | 1 | |
| 44 | 0101414000 | PIN | 1 | |
| 45 | 3315400900 | Pressure relief valve, complete | 1 | E |
| 46 | - | Pressure relief valve | 1 | |
| 47 | 0663910401 | O-RING | 1 | |
| 48 | 0663903201 | O-RING, Ø15.6x1.78 | 1 | |
| 49 | 0664000005 | Sealing ring, 29.70 x 35.70 x 1.50 mm, 1.17 x 1.41 x 0.06 in. | 1 | |
| 50 | 0580001476 | PIPE COUPLING | 1 | |
| 51 | 0663211125 | O-RING | 1 | |
| 52 | 0686925031 | Cap | 2 | |
| 53 | 3363109435 | Non return valve, G1/2 in. | 1 | |
| 54 | 0544215300 | GREASE NIPPLE | 1 | F |
| 55 | 3315409703 | Restrictor, complete | 1 | |
| 56 | 0663903201 | O-RING, Ø15.6x1.78 | 1 | |
| 57 | - | Restrictor, ø8.4 mm, 0.33 in. | 1 | |
| 58 | 0663910401 | O-RING | 1 | |
| 59 | 3315386500 | Restrictor plug | 1 | |
| 60 | 3315397900 | Plug | 1 | |
| 61 | 3315388000 | Valve cover | 1 | |
| 62 | 0663990041 | Stirromatic, 58 x 66 x 3 mm, 2.28 x 2.60 x 0.12 in. | 1 | |
| 63 | 3315388100 | Control valve | 1 | |
| 64 | 3315387600 | Back head | 1 | |
| 65 | 3315398800 | Base plate with through borings | 1 | |
| 66 | 3315387900 | Piston | 1 | |
| 67 | 0108110326 | Spring pin, option | 2 | |
| 68 | 3315439145 | Protective plug HATCON | 4 | |
| 69 | | HATCON label | 1 | |

Comments for Page: Hydraulic breaker

(L)OCAL REMARKS

A | VSTI R 1/4-ED

Refer to the DocMine web page for most up-to-date information. The printed information might be outdated.

Wed Nov 24 07:06:12 UTC 2021

B | VSTI R 3/8-ED

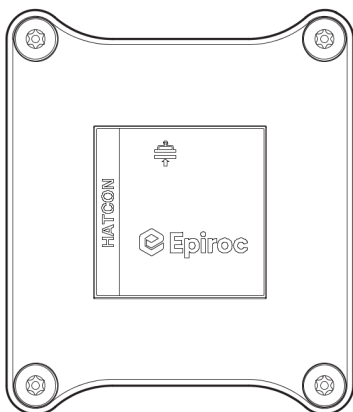
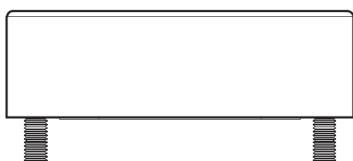
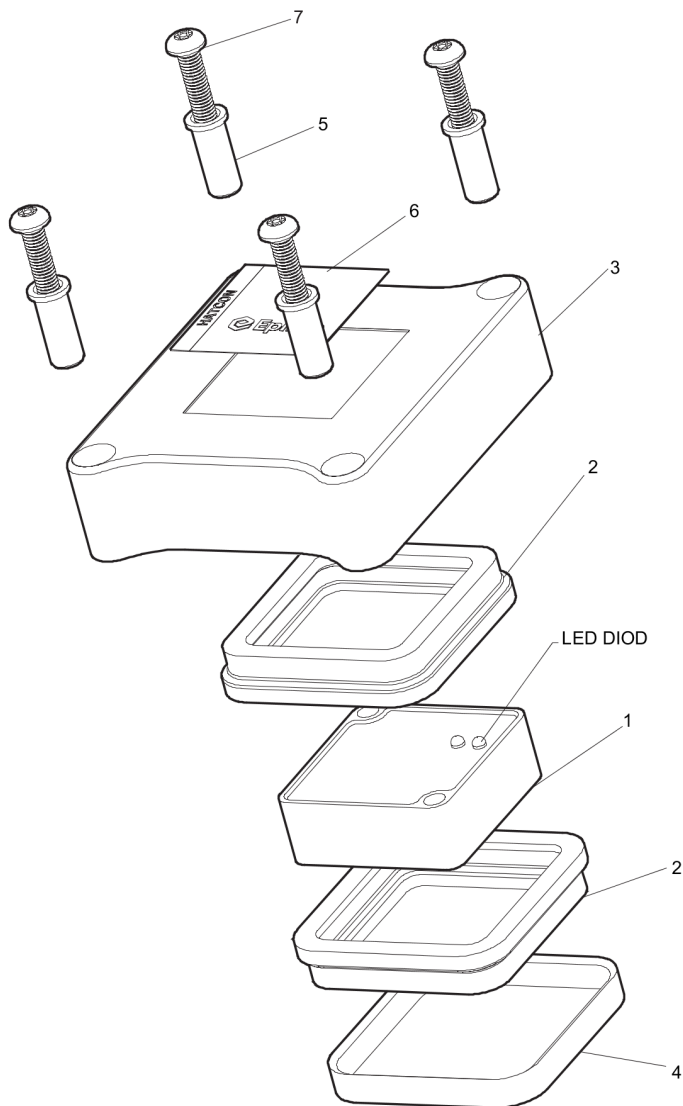
C | Screw with extra high fatigue strength

D | VSTI R 1/8-ED

E | CAS No. see chapter "Environmental Product Compliance - REACH Declaration"

F | ISO 7 - R 1/4

Mechanical HATCON (Horizontal)

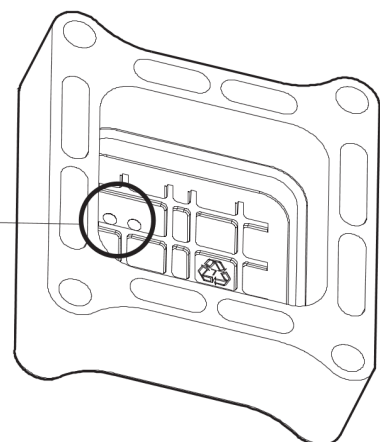


DETAIL A



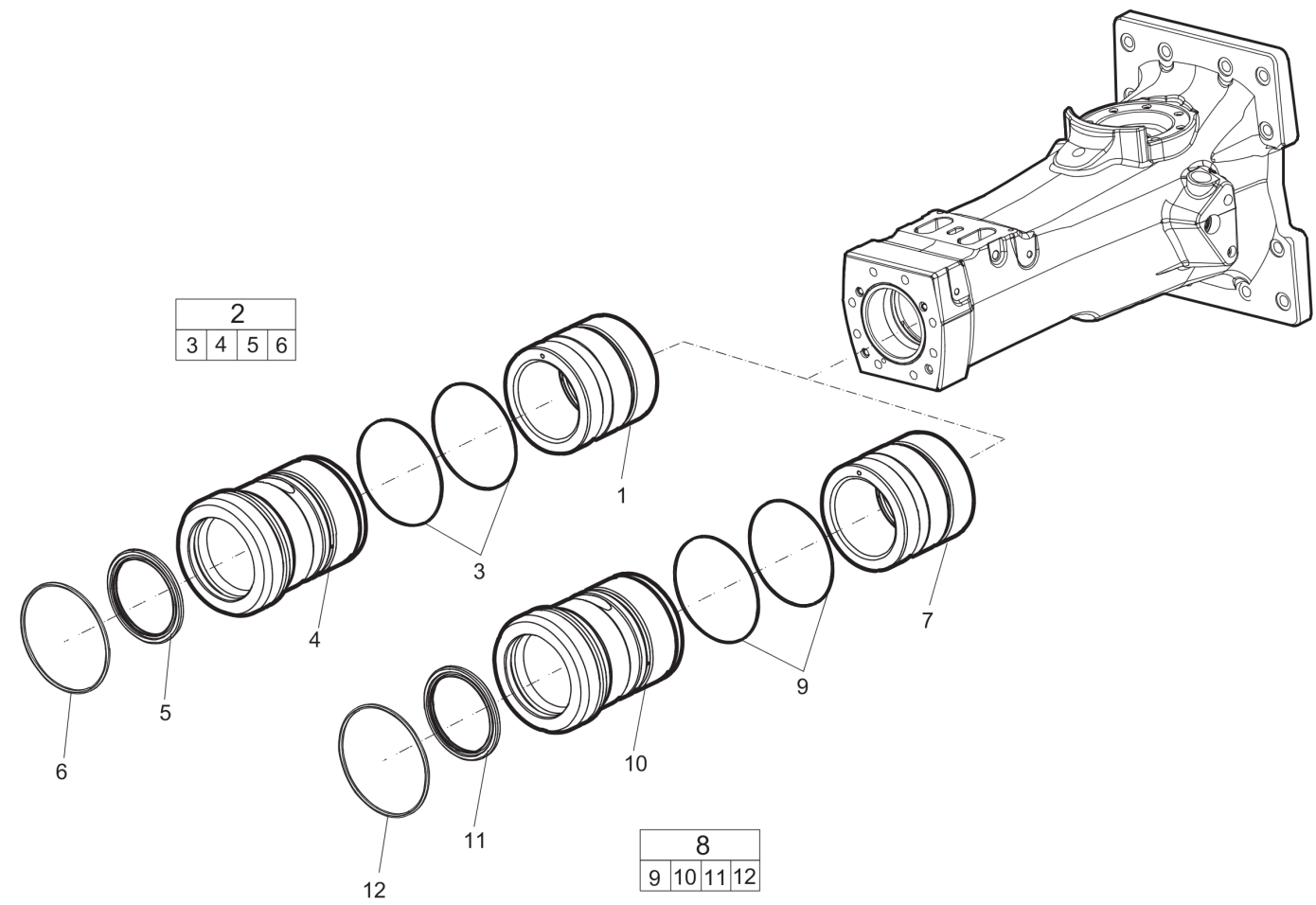
Horizontal mounted.
Match diods on POS.1 to
match the recess marked H on POS .3

SEE DETAIL A



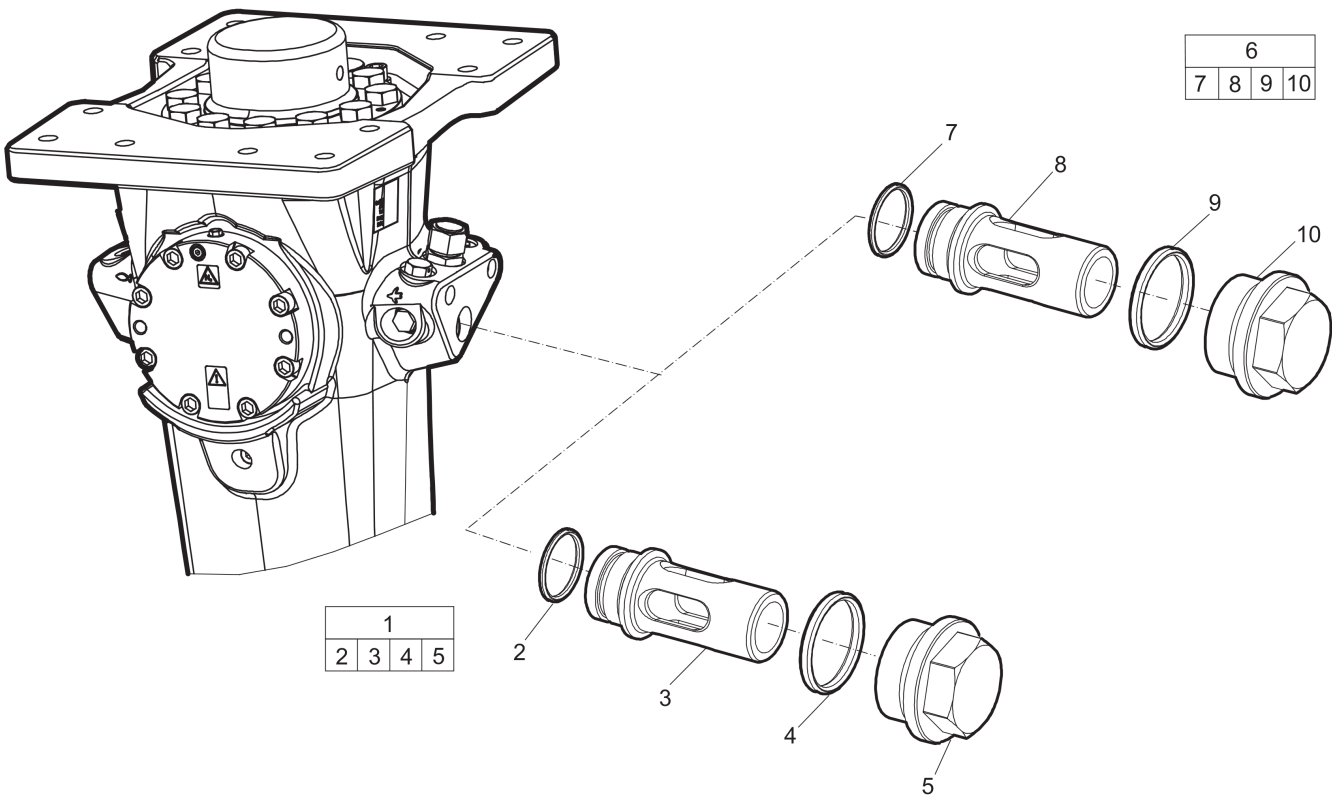
| Item | Part No. | Name | Qty | L |
|------|------------|------------------------|-----|---|
| 1 | | Tracking module HATCON | 1 | |
| 2 | 3315439130 | Damper HATCON | 2 | |
| 3 | 3315439118 | Housing type 4 HATCON | 1 | |
| 4 | 3315439140 | Lock ring HATCON | 1 | |
| 5 | 3315439120 | Sleeve HATCON | 4 | |
| 6 | 3315439100 | Product label HATCON | 1 | |
| 7 | 3315442600 | Screw HATCON | 4 | |

Mechanical Optional parts - Bushing oversize, complete



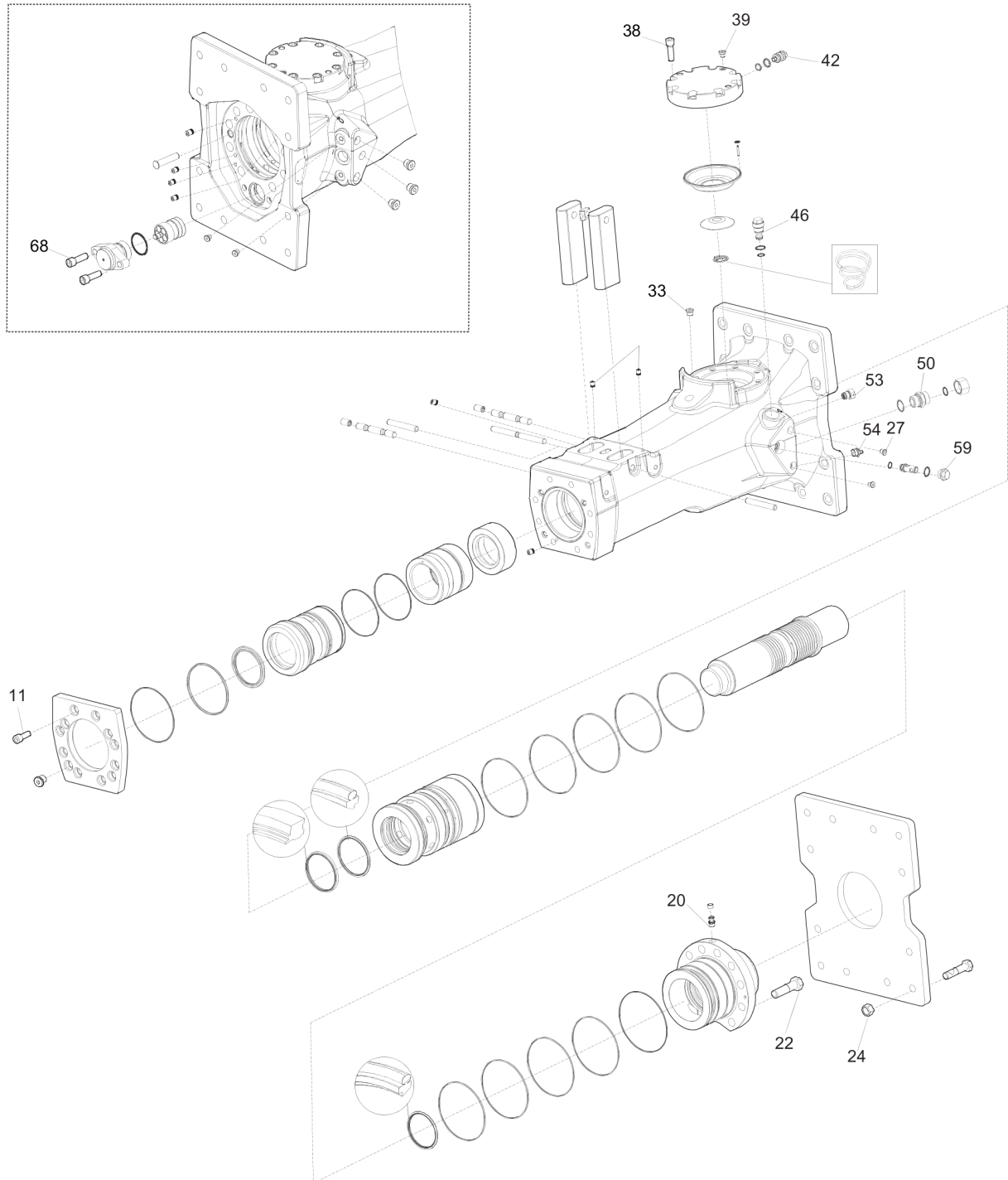
| Item | Part No. | Name | Qty | L |
|------|------------|---|-----|---|
| 1 | 3315395015 | Upper bushing, ø145.5 mm, ø5.75 in. | 1 | |
| 2 | 3315394760 | Bushing oversize, complete | 1 | |
| 3 | 0663210824 | O-ring, ø134.5 x 3 mm, ø5.30 x 0.12 in. | 2 | |
| 4 | - | Lower bushing, ø146 mm, ø5.73 in. | 1 | |
| 5 | 3315388700 | Scraper ring | 1 | |
| 6 | 0663210658 | O-RING | 1 | |
| 7 | 3315395030 | Upper bushing, ø147 mm, ø5.81 in. | 1 | |
| 8 | 3315394763 | Bushing oversize, complete | 1 | |
| 9 | 0663210824 | O-ring, ø134.5 x 3 mm, ø5.30 x 0.12 in. | 2 | |
| 10 | - | Lower bushing, ø147.5 mm, ø5.79 in. | 1 | |
| 11 | 3315388700 | Scraper ring | 1 | |
| 12 | 0663210658 | O-RING | 1 | |

Mechanical Optional parts - Restrictor, complete



| Item | Part No. | Name | Qty | L |
|------|------------|---------------------------------------|-----|---|
| 1 | 3315409704 | Restrictor complete | 1 | |
| 2 | 0663903201 | O-RING, Ø15.6x1.78 | 1 | |
| 3 | - | Restrictor sleeve, Ø7.0 mm, Ø0.28 in. | 1 | |
| 4 | 0663910401 | O-RING | 1 | |
| 5 | 3315386500 | Restrictor plug | 1 | |
| 6 | 3315409705 | Restrictor complete | 1 | |
| 7 | 0663903201 | O-RING, Ø15.6x1.78 | 1 | |
| 8 | - | Restrictor sleeve, Ø7.6 mm, Ø0.30 in. | 1 | |
| 9 | 0663910401 | O-RING | 1 | |
| 10 | 3315386500 | Restrictor plug | 1 | |

Mechanical Tightening torque



Refer to the DocMine web page for most up-to-date information. The printed information might be outdated.

Wed Nov 24 07:06:14 UTC 2021

| Item | Part No. | Name | Qty | L |
|------|----------|-------------------------------|-----|---|
| 11 | - | Hexagon socket screw - 180 Nm | - | A |
| 20 | - | Check valve - 30 Nm | - | B |
| 22 | - | Hexagon head screw - 550 Nm | - | C |
| 24 | - | Nut - 400 Nm | - | D |
| 27 | - | Hexagon socket plug - 30 Nm | - | E |
| 33 | - | Plug - 80 Nm | - | F |
| 38 | - | Hexagon socket screw - 300 Nm | - | G |
| 39 | - | Plug - 20 Nm | - | |
| 42 | - | Charge valve - 27 Nm | - | |
| 46 | - | Pressure relief valve - 80 Nm | - | |
| 50 | - | Nipple - 315 Nm | - | |
| 53 | - | Non return valve - 200 Nm | - | |
| 54 | - | Grease nipple - 30 Nm | - | |
| 59 | - | Restrictor plug - 80 Nm | - | |
| 68 | - | Screw - 300 Nm | - | |

Comments for Page: Tightening torque

LOCTITE is a registered trademark of Henkel Corporation. 243 is a trademark of Henkel Corporation Molykote is a registered trademark of Dow Corning Corporation.

(L)OCAL REMARKS

A | Molycote®

B | LOCTITE® 243™

C | Molycote®

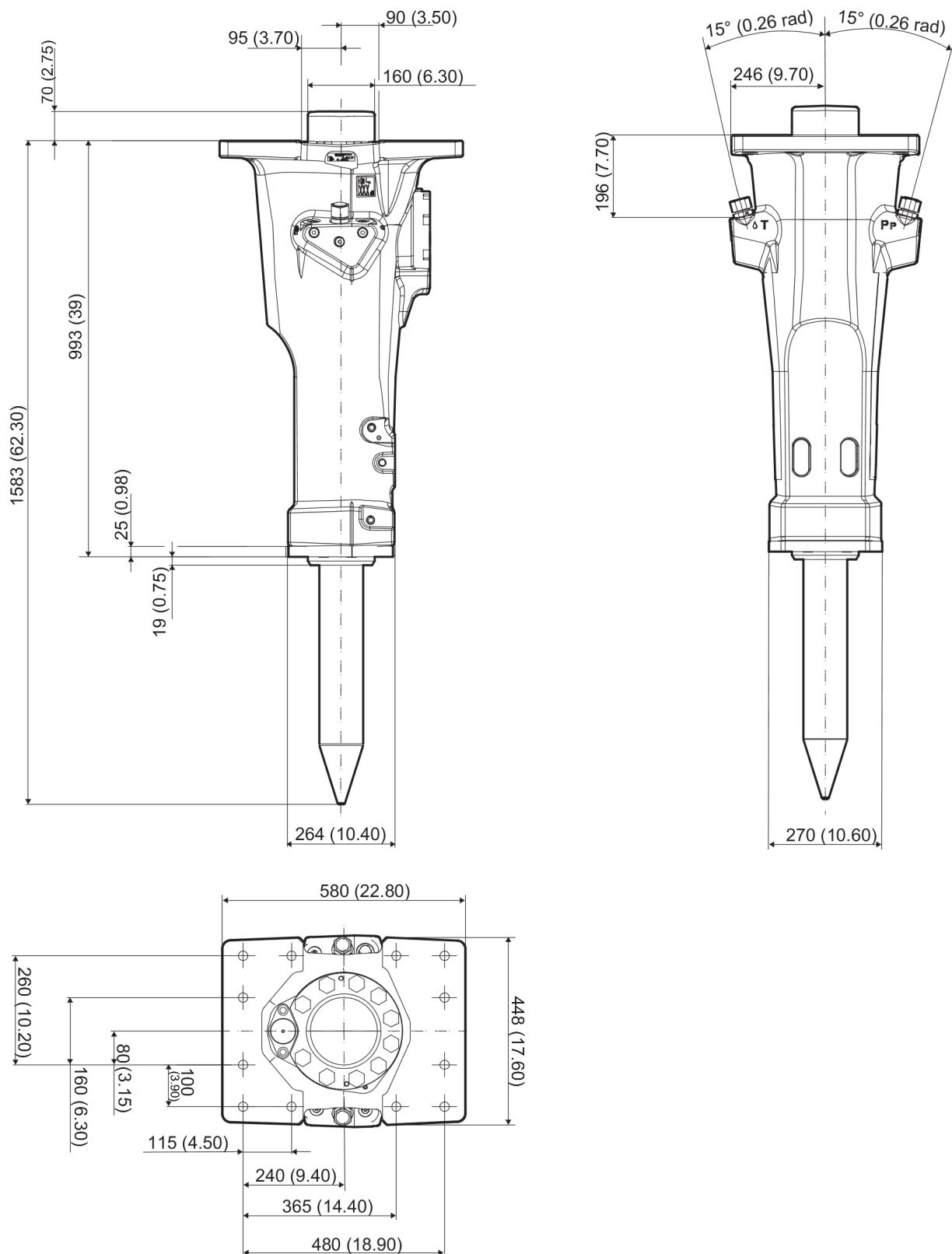
D | Molycote®

E | LOCTITE® 243™

F | LOCTITE® 243™

G | Molycote®

Mechanical Dimensions (mm)

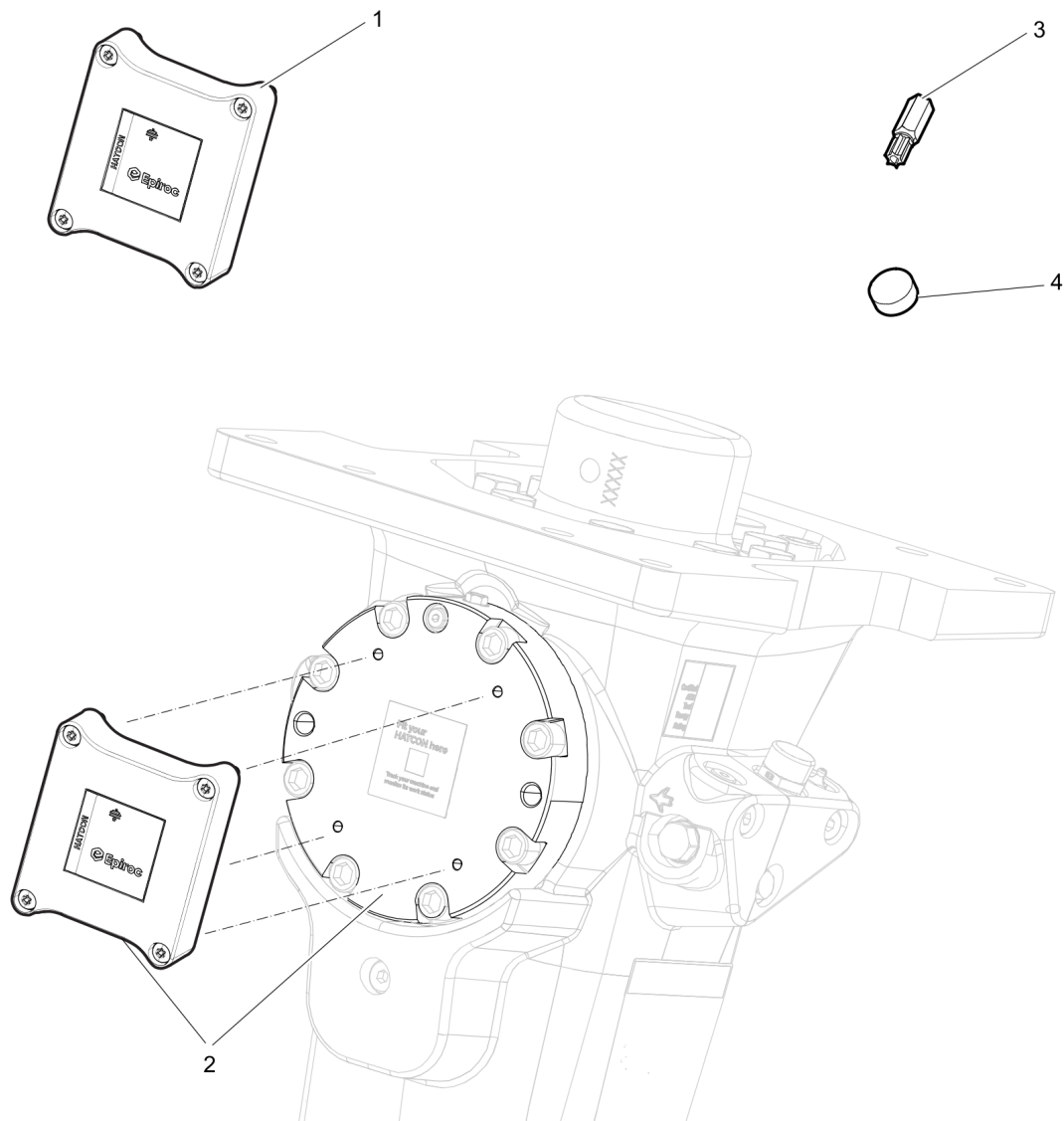


Refer to the DocMine web page for most up-to-date information. The printed information might be outdated.

Wed Nov 24 07:06:14 UTC 2021

This page intentionally left blank

Options / accessories Retrofit



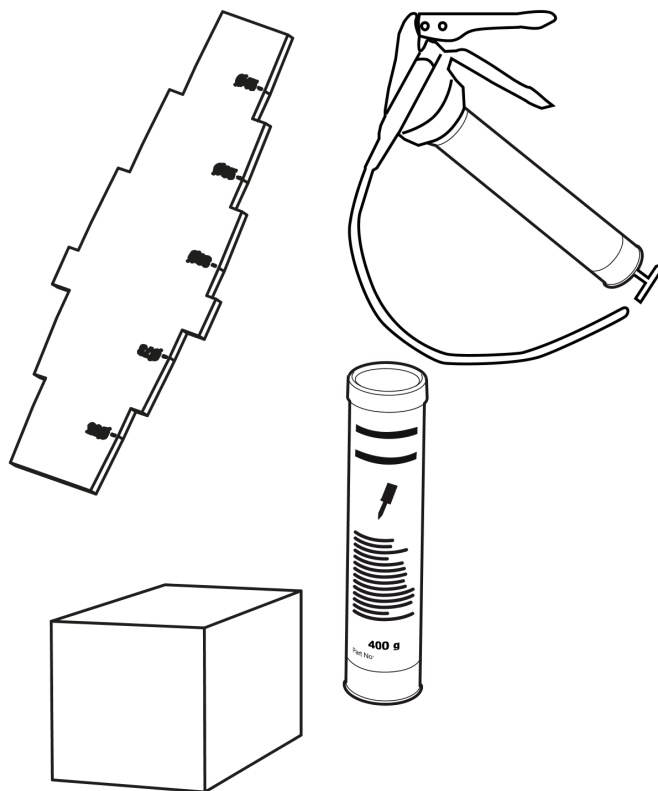
| Item | Part No. | Name | Qty | L |
|------|------------|-------------------------------|-----|---|
| 1 | 3315442504 | Retrofit kit | 1 | A |
| 2 | 3315442515 | Retrofit kit with accumulator | 1 | B |
| 3 | 3315439105 | Security bit HATCON | 1 | |
| 4 | 3315439106 | Magnet HATCON | 1 | |

Comments for Page: Retrofit

A | Valid from BES124968

B | Valid before BES124967

Options / accessories Optional equipment



| Item | Part No. | Name | Qty | L |
|------|------------|--|-----|---|
| - | 3363067123 | Automatic lubrication system | 1 | |
| - | 0909107100 | LUBRICAT.GUN | 1 | A |
| - | 3363094913 | Chisel paste cartridge for grease gun, 12 x 400 g (0.88 lbs) | 1 | |
| - | 3363067123 | Automatic lubrication system | 1 | |
| - | 3363067493 | Universall adapter kit | 1 | B |
| - | 3363091200 | Chisel paste cartridge, 12 x 500 g (1.1 lbs) | 1 | |
| - | 3363094669 | Filling device | 1 | C |
| - | 3363066412 | Filling adapter | 1 | D |
| - | 3363066411 | Filling device | 1 | E |
| - | 3362263900 | Chisel paste container (15 kg) | 1 | F |
| - | 3363122801 | Chisel paste container (45 kg) | 1 | G |
| - | 3360920415 | Filling device for accumulator | 1 | |
| - | 3363094459 | Nipple, for charging the accumulator | 1 | |
| - | 3361329803 | Filling hose for charging the accumulator | 1 | |
| - | 3315409200 | Bushing wear controller | 1 | |
| - | 3315395200 | Water Nossle | 4 | |

Comments for Page: Optional equipment

(L)OCAL REMARKS

A | For manual greasing with cartridge, 400 g (0.88 lb)

B | For ContiLube™ II

C | For the 500 g (1.10 lb) Chisel paste cartridges, to use in combination with Chisel paste container 15 kg (33 lb)

D | For the 500 g (1.10 lb)

Chisel paste cartridges, suitable with the filling device for 15 kg (33 lb) and 45 kg (99 lb)

E | For the 500 g (1.10 lb) Chisel paste cartridges, to use in combination with Chisel paste container 45 kg (99 lb)

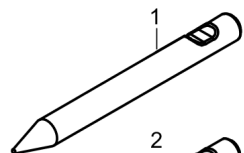
F | 15 kg

33 lb

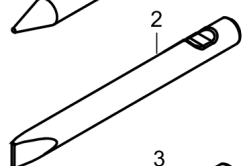
G | 45 kg

99 lb

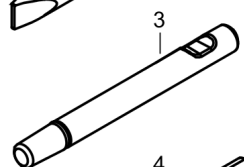
Options / accessories Working tools ClassicLine



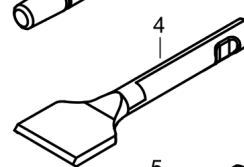
L=520 mm, LT=950 mm, Wt=61 kg
L=20.47 inch, LT=37.4 inch, Wt=134 lb



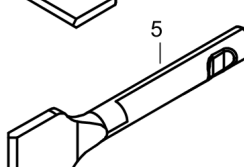
L=520 mm, LT=950 mm, Wt=63 kg
L=20.47 inch, LT=37.4 inch, Wt=139 lb



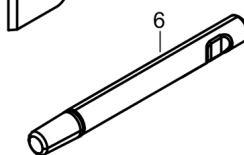
L=520 mm, LT=950 mm, Wt=66 kg
L=20.47 inch, LT=37.4 inch, Wt=146 lb



W=200 mm, L=570 mm, LT=850 mm, Wt=66 kg
W=7.9 inch, L=22.4 inch, LT=39.4 inch, Wt=146 lb



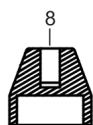
W=200 mm, L=570 mm, LT=850 mm, Wt=66 kg
W=7.9 inch, L=22.4 inch, LT=39.4 inch, Wt=146 lb



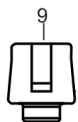
L=520 mm, LT=950 mm, Wt=64 kg
L=20.47 inch, LT=37.4 inch, Wt=141 lb



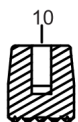
W=Ø400 mm, Wt= 80 kg
W=Ø15.75 inch, Wt= 176 kg



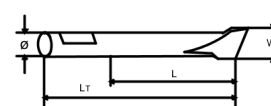
W=Ø200 mm, Wt= 33 kg
W=Ø7.87 inch, Wt= 73 lb



W= Ø150 mm, Wt=26 kg
W=Ø5.90 inch, Wt= 57 lb

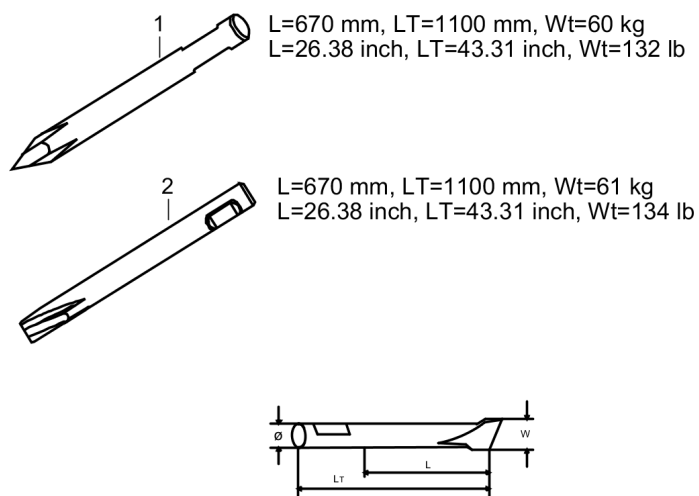


W=Ø190 mm, Wt=30 kg
W=Ø7.48 inch, Wt= 66 lb



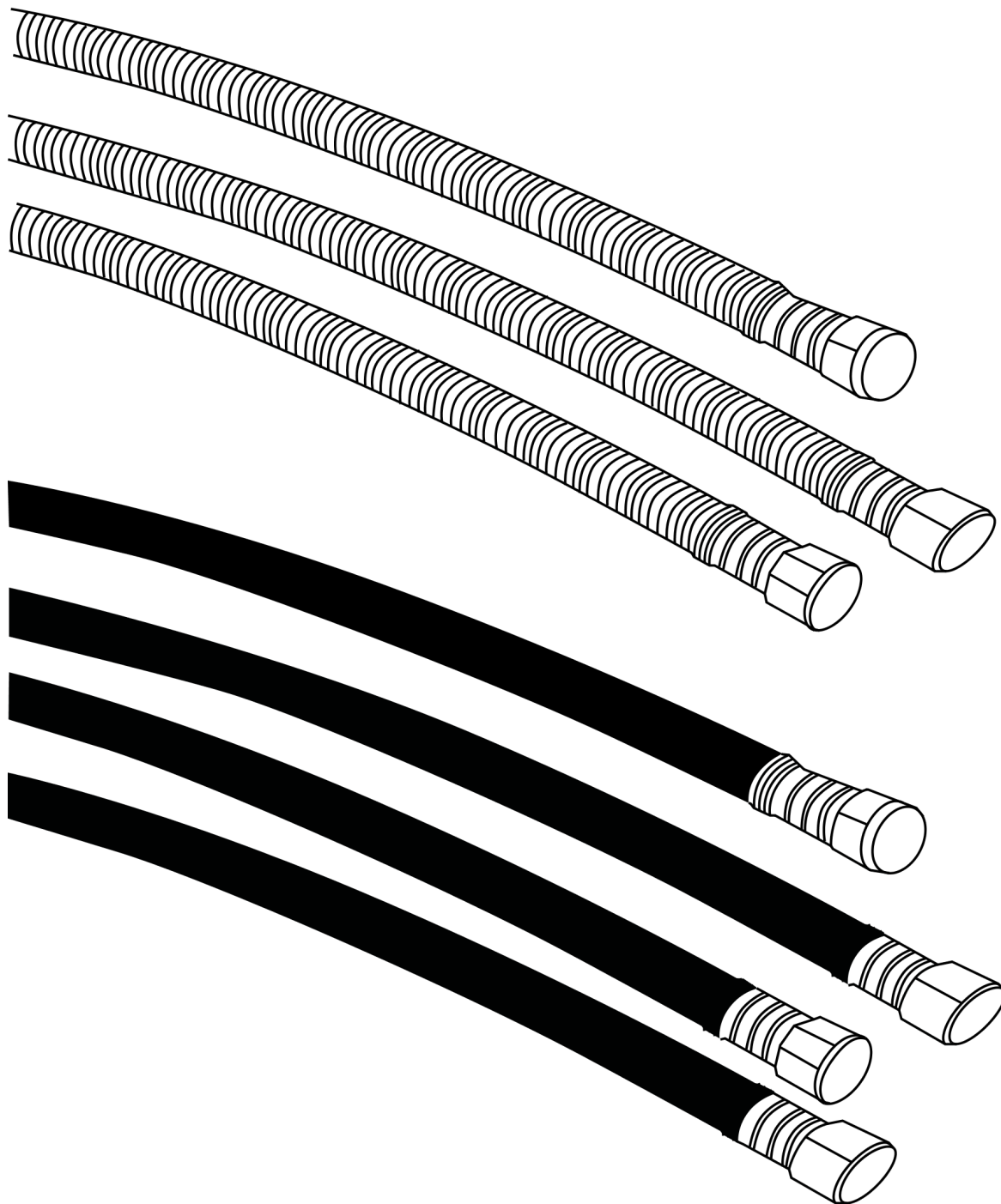
| Item | Part No. | Name | Qty | L |
|------|------------|-------------------------|-----|---|
| 1 | 3083342417 | Moil point | 1 | |
| 2 | 3083342418 | Chisel (cross) | 1 | |
| 3 | 3083342416 | Blunt tool | 1 | |
| 4 | 3083340959 | Wide chisel (cross) | 1 | |
| 5 | 3083340960 | Wide chisel (parallel) | 1 | |
| 6 | 3083342419 | Shaft | 1 | |
| 7 | 3315371200 | Tamping pad (square) | 1 | |
| 8 | 3315372000 | Post driver pad (round) | 1 | |
| 9 | 3315372600 | Pile driver pad (round) | 1 | |
| 10 | 3315373200 | Bushing pad (round) | 1 | |

Options / accessories Working tools ProLine



| Item | Part No. | Name | Qty | L |
|------|------------|---------------------------|-----|---|
| 1 | 3363120271 | Moil point (X-profile) | 1 | |
| 2 | 3363120272 | Chisel, cross (X-profile) | 1 | |

Options / accessories Hydraulic hoses



| Item | Part No. | Name | Qty | L |
|------|------------|--|-----|---|
| - | 3360332294 | Hydraulic hose, I.D. 20 (0.79 in.), both ends M36 x 2 mm conical seal 24°, length 2,300 mm (90.5 in.) | 2 | |
| - | 3363085947 | Hydraulic hose, I.D. 20 (0.79 in.), both ends M36 x 2 mm conical seal 24°, length 2,800 mm (110.2 in.) | 2 | |

Annex Environmental Product Compliance - REACH Declaration

NO EXPLODED VIEW
AVAILABLE
FOR THIS BOM

| Item | Part No. | Name | Qty | L |
|------|----------|--|-----|---|
| 45 | - | Pressure relief valve, complete, Part No. 3315400900 - CAS No. 7439-92-1 | - | |

Comments for Page: Environmental Product Compliance - REACH Declaration

EU REACH Candidate List substances present in product listed above.

Any unauthorized use or copying of the contents or any part thereof is prohibited.
This applies in particular to trademarks, model denominations, part numbers, and
drawings.