

Boomer XL3 D face drilling rig

Three-boom tunneling drill rig for large sized underground tunnels and cross sections, with maximum coverage area 178 m²



A giant of high penetration

Boomer XL3 D is a high efficient three-boom pilot-hydraulic controlled face drilling rig, fulfilling all range large site underground applications with high productivity and ecofriendly design.

+ Main benefits

New designed boom bracket enlarges the coverage area, the height of which is up to 12.4-13.1 m

Reliable and easy maintainable COP 1838HD+ rock drill with high reputation.

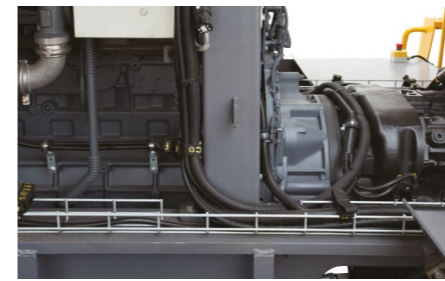
Advanced and powerful water-cooled Deutz engine, 173 kW with Stage IIIA emission.

DCS 2 pilot hydraulic control system.

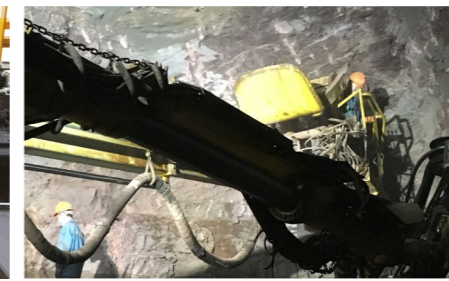
FOPS protective roof or cabin can move upwards 1100 mm to have good vision for the operator.

Three rock drills COP 1638HD+, COP 1838HD+, and COP 2238HD+ with high reputation are available for various application demands.

Rigid heavy-duty BMH 6000 series feed for medium-sized and large drill application



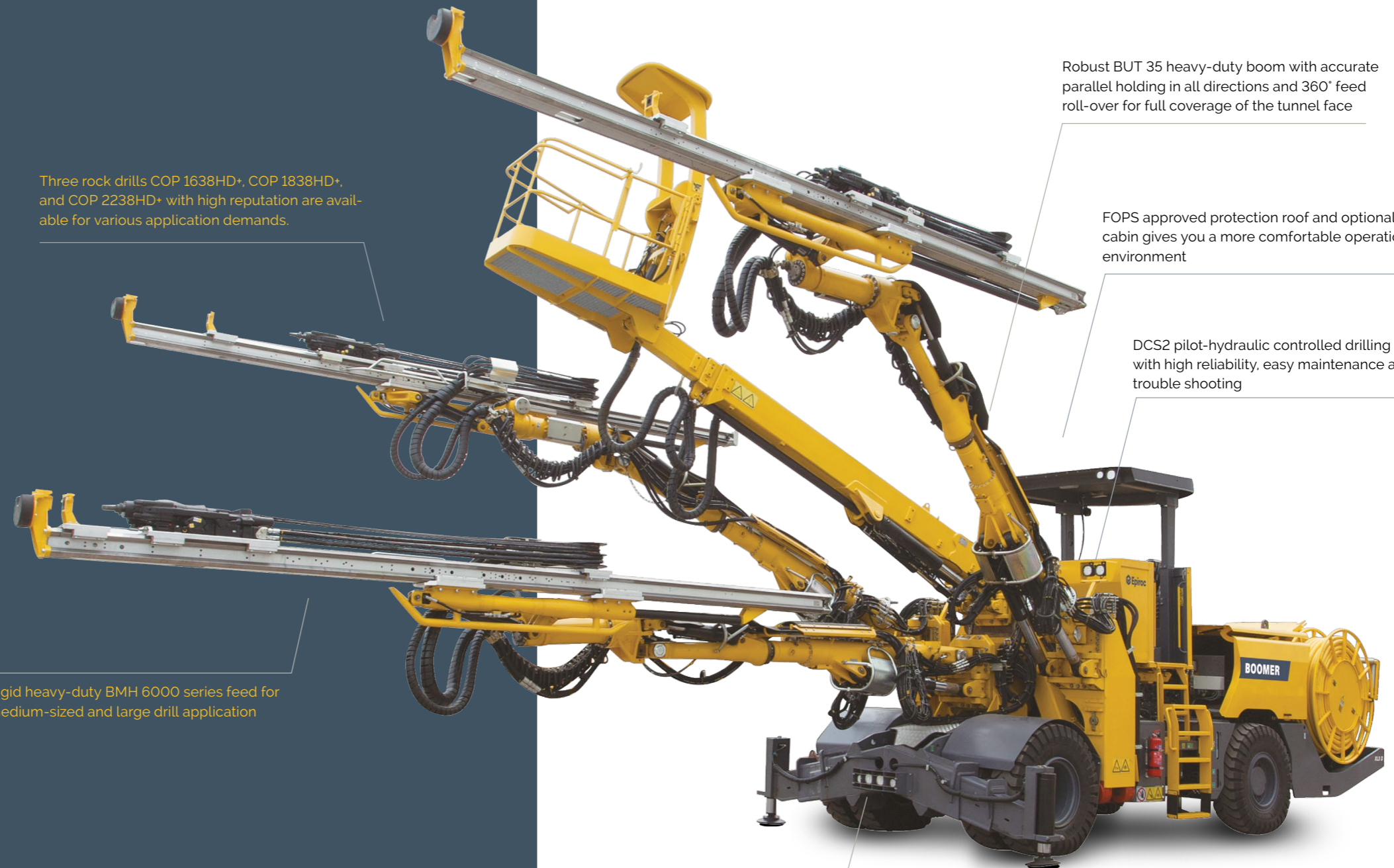
Standard advanced and powerful water-cooled Deutz engine, 6-cylinder, 173 kW with Stage IIIA emission



Service basket also equipped with FOPS approved protective roof, which gives the operator a safer operation environment



Maintenance-friendly design makes the service work safe and easy. All service points are reachable from ground level



Robust BUT 35 heavy-duty boom with accurate parallel holding in all directions and 360° feed roll-over for full coverage of the tunnel face

FOPS approved protection roof and optional cabin gives you a more comfortable operation environment

DCS2 pilot-hydraulic controlled drilling system with high reliability, easy maintenance and easy trouble shooting

Sturdy carrier with imported large power 173 kW 6-cylinder, low-emission diesel engine

All for your high performance and safe operation

With mature engineering solution, solid experiences base and genuine components



+ Drilling system

The reliable drilling system includes various functions to ensure high efficient working, such as collaring automatics, rotation pressure controlled feeding (RPCF), excellent anti-jamming function and big hole drilling kit.



+ FAM III (Feed Angle Measurement)

Epiroc FAM III system guarantees you high precision drilling position, including:

- Drill plan and boom position display on screen
- Import/Export of drill plan data to screen via USB stick
- Underground Manager drill plan design software
- Manual drilling
- Manual positioning



+ Operator station

The Boomer XL3 D is designed with safety and ergonomics in mind. Operators can work under safe FOFS approved protection roof with optional cabin. Operators' platform lift system raises the operators' platform 1100mm from standard height, assists the operator visibility when drilling. Easy access to hydraulic parts under the operators' platform makes maintenance a lot easier.



A comprehensive service offering

Even the best equipment needs to be serviced regularly to make sure it sustains peak performance. An Epiroc service solution offers peace of mind, maximizing availability and performance throughout the lifetime of your equipment. We focus on safety, productivity and reliability.

By combining genuine parts and an Epiroc service from our certified technicians, we safeguard your productivity - wherever you are.

Technical specifications

Rock drill

	COP 1638HD*	COP 1838HD*	COP 2238HD*
Shank adapter	R38/T38	R38/T38	R38/T38
Hole over drill center	88 mm	88 mm	88 mm
Length without shank	1 008 mm	1 008 mm	1 008 mm
Impact power	16 kW	18 kW	22 kW
Impact rate	60 Hz	60 Hz	73 Hz
Hydraulic pressure	200 bar	230 bar	250 bar
Rotation system	Separate rotation	Separate rotation	Separate rotation
Rotation speed	0-340/0-215 rpm	0-340/0-215 rpm	0-340/0-215 rpm
Rotation torque, max	640/1 000 Nm	640/1 000 Nm	640/1 000 Nm
Lub. air consump. at 2 bar	5 l/s	5 l/s	5 l/s
Water consumption	40-120 l/min	40-120 l/min	40-120 l/min
Weight	175 kg	175 kg	175 kg
Sound level	<106 dB(A)	<106 dB(A)	<106 dB(A)

Feed

	BMH 6800	BMH 6814	BMH 6816	BMH6818	BMH 6820
Total length	5 882 mm	6 502 mm	7 102 mm	7 102 mm	7 677 mm
Drill rod length	4 310 mm	4 920 mm	5 530 mm	5 530 mm	6 100 mm
Hole depth	4 048 mm	4 668 mm	5 268 mm	5 268 mm	5 843 mm
Weight, incl. drill	670 kg	705 kg	745 kg	745 kg	775 kg
Feed force	22 kN	22 kN	22 kN	22 kN	22 kN

Boom

- BoomBUT 35
- Feed extension 1 800 mm
- Boom extension 1 600 mm
- Parallel holdingcomplete
- Feed roll-over 360°
- Max. lifting angle +70°/-30°
- Boom swing angle L/R ±45°
- Weight, Boom only..... 2 920 kg

Control system

- Direct hydraulic Control System, DCS 2
- Basic functions such as anti-jamming included

Hydraulic system

- Hydraulic pumps..... 3 separate units, one for each boom
- Pumps unloaded at start
- System pressure, max..... 210 bar
- Hydraulic oil tank, volume min/max..... 470/755 l
- Low oil level indicator
- Oil temperature gauge on oil tank
- Electrical oil filling pump
- Filtration..... 10 µm
- Mineral hydraulic oil

Drilling system

- Rock drill lubrication warning kit

Electric system

- Total installed power 200 kW
- Main motors..... 3 x 55 kW
- Voltage..... 400-690 V

- Frequency..... 50-60 Hz
- Starting method..... star/delta
- Thermal overload protection for electric motors
- Digital voltmeter/amperage/percussion hour meter in electric cabinet
- Phase sequence indicator
- Earth fault indicator
- Battery charger
- Transformer..... 12 kVA
- Cable reel, diameter..... 1 020/1 800 mm
- Limit switch for cable reel
- Dual controls for cable reel

Air system

- Electric driven piston compressor..... Atlas Copco LE 10
- Capacity, 7 bar..... 15.7 l/s
- Electric motor..... 7.5 kW
- Air pressure gauge

Water system

- Electric driven water booster pump Lowara 22SV12F150
- Water booster pump max capacity at 17 bar..... 300 l/min
- Min water inlet pressure at 300 l/min..... 2 bar
- Electric motor..... 15 kW
- Water pressure gauge
- Water flow guard

Carrier

- Engine..... Deutz TCD 2013 L06 2V Stage IIIA / Tier 3
- Power rating at 2 300 rpm..... 173 kW (235 hp)
- Torque at 1 500 rpm..... 907 Nm
- Four-wheel drive
- Hydrostatic power steering system
- Hydrodynamic transmission..... Clark 32 000
- Front axle..... Dana 37R116
- Rear axle Dana 213/169 with ± 7° oscillation
- Manual differential lock on front axle
- Tyres 14.00 x R24 Michelin XKA
- Clearance outside axles..... 15"
- Hydraulic jacks, front 2 extendable with large plates
- Hydraulic jacks, rear..... 2
- Service brakes..... 2 separate circuits
- Emergency and parking brakes..... SAHR
- Fuel tank, volume..... 150 l
- Electric system..... 24 V
- Batteries..... 2 x 120 Ah
- Trimming lights, LED..... 8 x 40W
- Working lights, LED..... 8x80W
- Illuminated stairs for platform, LED..... 2 x 40W
- Silencer
- Fire extinguisher..... 2 x 6 kg
- Gradeability at max. load on drive wheels..... 1:4
- Beacon and reverse alarm
- Horn
- Hand throttle

Technical specifications

Optional equipment

Drifter rods

Dimension		Min. hole diameter
mm	R38-HEX 35-R32	45
	T38-HEX 35-R32	45
	T38-HEX 35-R32 Speedrod	45
	R38-HEX 35-SR35 Speedrod	45
	T38-HEX 35-SR35	45
	T38-Rnd 39-SR35	45
	T38-HEX 35-R35	48
	T38-HEX 35-R35 Speedrod	48
	T38-Rnd 39-R35	48
	T38-Rnd 39-R35 Speedrod	48

Shank adapters

Thread	Diameter	Length	Part No.
mm	R38	38	404-09101.00
	T38	38	435-09101.00
	T38	38	435-09103.00*

*Intended for RAS and extension drilling with BSH 110

Shank adapters

Thread	Diameter	Length	Part No.
mm	R38	55	304-0055.00
	T38	55	335-0055.00

Extension rods for injection drilling/RAS

Dimension		Min. hole diameter
mm	R32 Speedrod	51
	T38 Speedrod	64

Drilling System

- Hole blowing kit, excluding CSA approved air receiver (CE)

Feed

- Extension drilling set BSH 110
- Top-mounted feeds

Boom

- BUT 35L (SP3 should be used if needed)
- Automatic boom lubrication system, rear part of boom
- Feed Angle Measurement system (FAM I)
- Feed Angle Measurement system with hole depth measurement (FAM II)
- Feed Angle Measurement system with hole depth measurement and drilling plan (FAM III)

Air system

- Extra compressor LE5 additional 8 l/s at 8 bar (used for hole blowing kit, manual lubrication kit, and air-water outlet on platform)

Water system

- Water hose reel, diameter 1 800 mm
- Dual controls for hose reel
- Water hose, diameter 2", length 70 m at 70% filling rate

Hydraulic system

- Biodegradable hydraulic oil

Carrier

- Exhaust system catalyser
- Exhaust system particle filter
- Spotlight LED 70W, left/right

Electrical system

- Electric cable, Buflex
- Plug
- Socket
- Switch gear
- Connector
- Electric outlet for accessories, 3-phase, max 16 A, 690 V
- 3-phase outlets 32 A/16 A, with extra transformer 15 kVA, 1-phase outlets 10 A

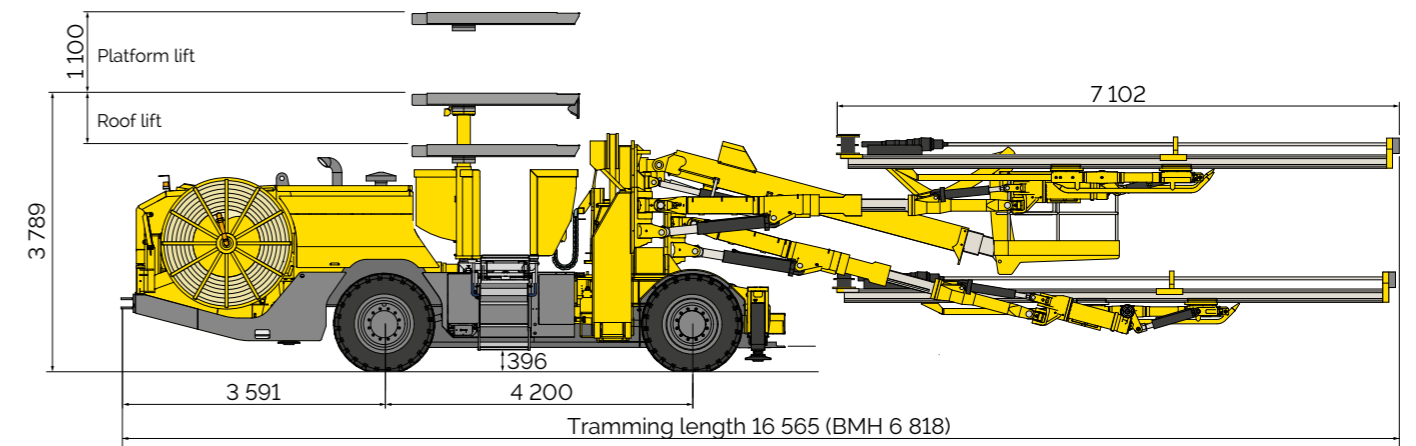
Miscellaneous

- Service platform, SP2 or SP3
- FOPS-approved protective roof for service platform
- Water and air outlet in service platform basket
- Hydraulic Swellex pump
- Holder for spare drill rods
- Rig washing kit
- Manual lubrication system

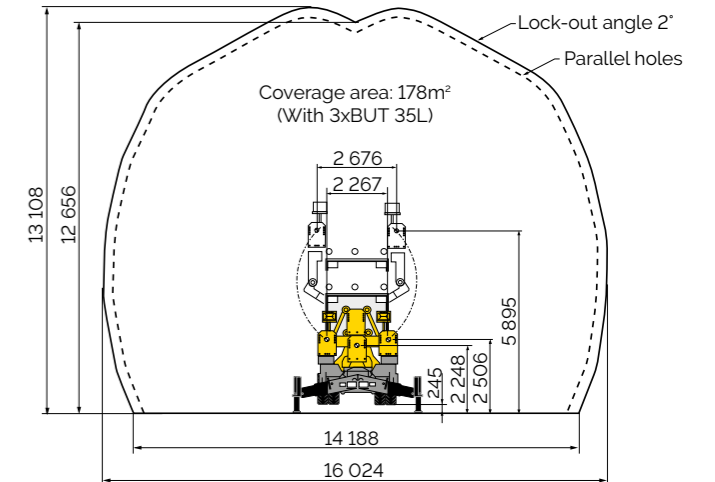
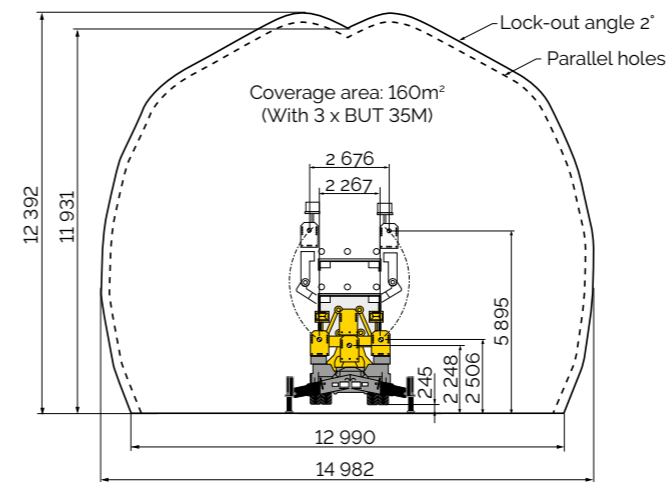
Technical specifications

Measurements

Side view



Coverage area



Dimensions

mm		
	Width	2 926
	Height roof down	3 089
	Height roof up	3 789
	Length with BMH 6818 feeds	16 565
	Ground clearance	396
	Turning radius	12 100/6 700

Weight

gross weight		
kg	Total	42 000
	Boom side	32 000
	Engine side	10 000

Tramming speed

km/h		
	On flat ground (rolling resistance 0.05)	>17
	On incline 1:8	>6

Noise and vibration

Operator sound pressure level in canopy, drilling, free field (ISO 11201)	104±6 dB(A) re 20µPa
Operator sound pressure level working close to machine, drilling, free field	104±6 dB(A) re 20µPa
Sound power level (ISO 3744), drilling, free field	130 dB(A) re 1pW
Vibration levels standing, canopy (ISO 2631-1)	0.1± 0.15 m/s²

Recommended cable size and length

Voltage	Type	Dimension, mm²	Diameter, mm	Length, m
400 V	Buflex	4x185+3G35	55	100
440-500 V	Buflex	3x150+3G25	52	110
550 V	Buflex	3x120+3G25	46	135
690 V	Buflex	3x95+3G16	42	150
1 000 V	Buflex	3x50+3G10	32	250

G - Protection yellow/green
Recommendations are given for surrounding temperature of 40 °C and up to a height of 2 000 m.

United in performance. Inspired by innovation.

Performance unites us, innovation inspires us, and commitment drives us to keep moving forward. Count on Epiroc to deliver the solutions you need to succeed today and the technology to lead tomorrow.
epiroc.com

